

General Information

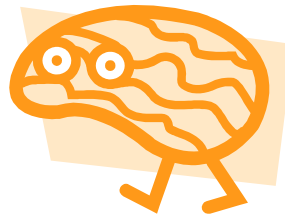
The conference will be held at Buffalo State College in **Bulger Communication Center East (bldg. # 24)**. It is universally accessible. Please let us know if you have special needs. Hot breakfast will be provided. Conference parking is available in all faculty, staff and student lots. The **T** and **U** lots are most convenient.

Directions

For maps and directions go to <http://www.buffalostate.edu/visit.xml>



Optimizing Independence in Individuals with Functional Cognitive Impairments



**October 15, 2011
8:30 am—12:30 pm**

**Bulger Communication Center
Buffalo State College
1300 Elmwood Ave
Buffalo NY 14222**

SHAWNY
P.O. Box 147
3842 Harlem Rd.
Cheektowaga, NY
14215

Non-Profit Org.
U.S. Postage
PAID
Buffalo, NY
Permit No.

Course/Presentation

Description

This program will provide participants with the tools they need to understand and address cognitive impairments in order to maximize clients' functional skills. The information is particularly focused on functional treatments for memory, attention, auditory processing disorders, and executive functioning using a team approach. The rationale and evidence for these treatments will be presented.

Agenda

- 8:30-9:00: Registration and Hot Breakfast
- 9:00-9:15: Welcome, Introductions — Sue Bognar, MS, CCC/SLP, SHAWNY Co-President
- 9:15-9:45: Overview of TBI, Polytrauma, and Cognitive Rehabilitation Interdisciplinary Team Approach
- 9:45-10:30: Functional Cognitive Impairment, Auditory Processing Disorders
- 10:30-10:45 Break
- 10:45-11:30: Attention, Memory, Executive Function
- 11:30-12:15: Treatment
- 12:15-12:30: Case Discussion

Learner Outcomes


At the conclusion of this session, participants will be able to:

1. Identify the nature and sequelae of blast injury, post-traumatic stress disorder (PTSD) and polytrauma.
2. Describe the scope of cognitive communication deficits that are labeled as functional cognitive impairments.
3. Name the similarities and differences in individuals with functional cognitive impairments and auditory processing disorders.
4. Apply the interdisciplinary approach to cognitive rehabilitation.
5. Describe adaptation of cognitive rehabilitation to individuals who have functional cognitive impairments.

Speakers

Rachel Castricone, MA, CCC/ SLP, is currently a speech-language pathologist at the Buffalo VAMC where she is involved in evaluation, treatment and program planning for adults with a wide range of communication and swallowing disorders. She also serves as the co-chairperson of the National VA Dysphagia Committee. Areas of interest include dysphagia secondary to head and neck cancer and cognitive deficits as a result of TBI and PTSD. Additionally, Ms. Castricone mentors graduate students in Communicative Disorders and Sciences in her role as a clinical supervisor.

Jennifer McGraw, MS, CCC/SLP, is a licensed SLP working for the Buffalo VAMC. She received her B.A. from the University of Buffalo and M.S. from University of Nebraska-Omaha. Ms. McGraw has practiced across the continuum of care from acute to long term . Her clinical interest areas include assessment and treatment of cognitive-linguistic impairment, secondary to TBI and PTSD, and neurogenic dysphagia. She is a certified LSVT provider. Additional professional roles include clinical supervisor and lecturer. Ms. McGraw is a member of ASHA special interest groups 13 (Dysphagia) and 15 (Gerontology) and is a three-time recipient of the ASHA ACE.

APPROVED PROVIDER

ASHA CONTINUING EDUCATION
AMERICAN SPEECH-LANGUAGE-HEARING ASSOCIATION

The Speech & Hearing Association of Western NY is approved by the Continuing Education Board of the American Speech-Language-Hearing Association (ASHA) to provide continuing education activities in speech-language pathology and audiology. **See course information for number of ASHA CEUs, instructional level and content area.** ASHA CE Provider approval does not imply endorsement of course content, specific products or clinical procedures.

This course is offered for .3 ASHA CEUs (Intermediate level, Professional area).

***Attendees are asked to bring a deck of playing cards to the program.**

Registration Form

Optimizing Independence in Individuals with Functional Cognitive Impairments

**October 15, 2011
8:30-12:30**

Name _____
 Address _____
 City _____
 State/Zip _____
 Company _____
 Email _____
 Phone _____

Please check one:

- \$40.00 Registration SHAWNY members (or any NYS Regional Association Member)
- \$50.00 Registration Professionals/Non-members
- \$15.00 Registration Students SHAWNY members
- \$20.00 Registration Students (non-members)

Signature of Chair/Advisor for student registration

Amount enclosed \$ _____

**Please make your check payable to:
SHAWNY**

We do not accept purchase orders. You must pay the registration fee and then request reimbursement from your employer.

Bring, mail, or fax this registration form to:
 Deborah Insalaco
 Buffalo State College
 1300 Elmwood Ave, KH 213
 Buffalo, NY 14222
 Phone: (716) 878-5319 Fax: (716) 878-5711
 E-mail: insaladm@buffalostate.edu